

Benefits

- Maximize use of software licenses and CPUs.
- Provide easy and effective monitoring of jobs with well designed interface.
- Enforce fair share policies.
- Provide fastest throughput, lowest overhead.

NetworkComputer™ by RTDA is a fast and complete job scheduler. It maximizes the utilization of your computers and your software licenses.

Fast Scheduling

NetworkComputer features a **near-zero latency event-driven scheduler**, which adds virtually no overhead to the job's runtime. This not only significantly reduces the overhead but also enables *NetworkComputer* to efficiently run hundreds of thousands of jobs daily.

The fair share rules are applied to the users competing for resources. If there is no competition, a single user is allowed to use all necessary resources required to complete all tasks in the minimum amount of time.

Workload Visualization

NetworkComputer provides unique **visualization** and **failure location** capabilities, for viewing "at a glance" which jobs have completed, which have failed, and which are waiting. A simple click brings up the relevant log files for quick analysis of a job's failure.

Preemption

Job preemption can be used when one or more urgent jobs require licenses that are currently used by other less important jobs. Instead of waiting for the jobs to finish, *NetworkComputer* can suspend the running jobs and free the licenses. When the urgent jobs are done, the suspended jobs are resumed.

Monitoring and Alerts

The user can communicate with *NetworkComputer* through a browser interface, a graphical UI, or a command line interface. *NetworkComputer* sends automatic alerts to the administrator when anomalous situations occur. This automatic notification reduces the effort required to keep the job scheduling, and the whole system, performing at a high level.

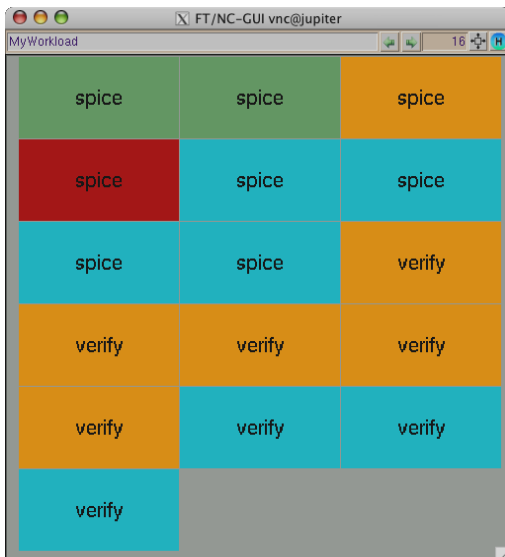
There is no need to set aside licenses for urgent jobs, a strategy that leads to inefficient license utilization. Instead, with preemption, *NetworkComputer* can achieve **100% license utilization** while servicing all classes of jobs.

Fair Share Policies

NetworkComputer enables implementation of fair share policies for both hardware resources and software licenses to ensure that business-critical work is completed on time.

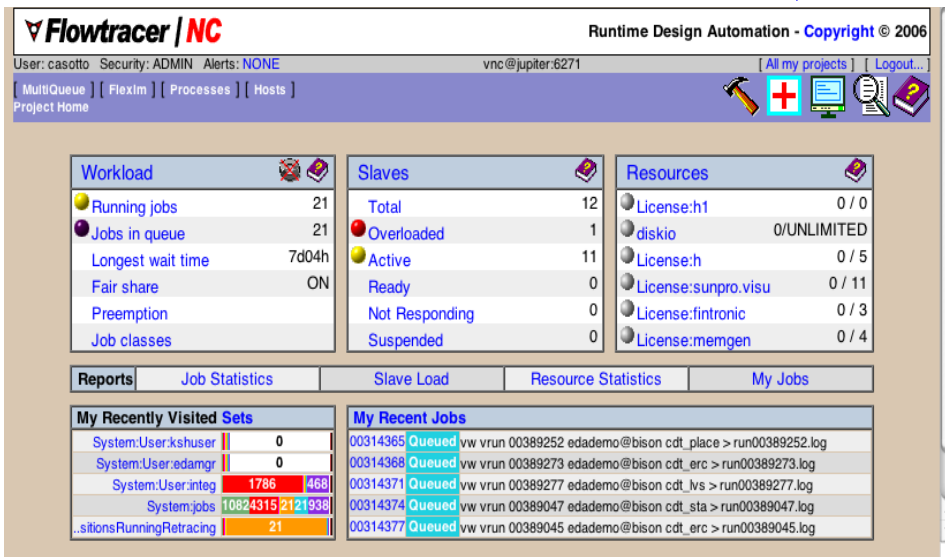
Workload Metrics

NetworkComputer allows you to identify and report on bottleneck resources that are preventing jobs from running, whether they are hardware or software. Report on jobs by user, tool, group, project, and more to determine your workload demographics. *NetworkComputer's* database-driven reporting capability gives you complete visibility over your workload.



spice	spice	spice
spice	spice	spice
spice	spice	verify
verify	verify	verify
verify	verify	verify
verify		

NetworkComputer provides unique visualization and failure location capabilities to allow you to see at a glance which jobs have completed, which jobs have failed, and which jobs are waiting. A simple click brings up the relevant log files to help you quickly analyze a job's failure.



The built-in browser interface provides a dashboard for job control and reporting.

License Allocation Across Sites

Organizations with multiple locations may want to share expensive software licenses. The MultiQueue subsystem of NetworkComputer coordinates the allocation of those licenses across multiple sites, on a minute-by-minute basis, based on the demand for licenses at each site and on policies defined by the queue administrators. This leads to a higher workload throughput at each site and to a better ROI on the shared licenses.

RTDA Software Family

FlowTracer: Platform for developing and executing design flows. A modern replacement for Makefiles.

NetworkComputer: Fastest job scheduling system.

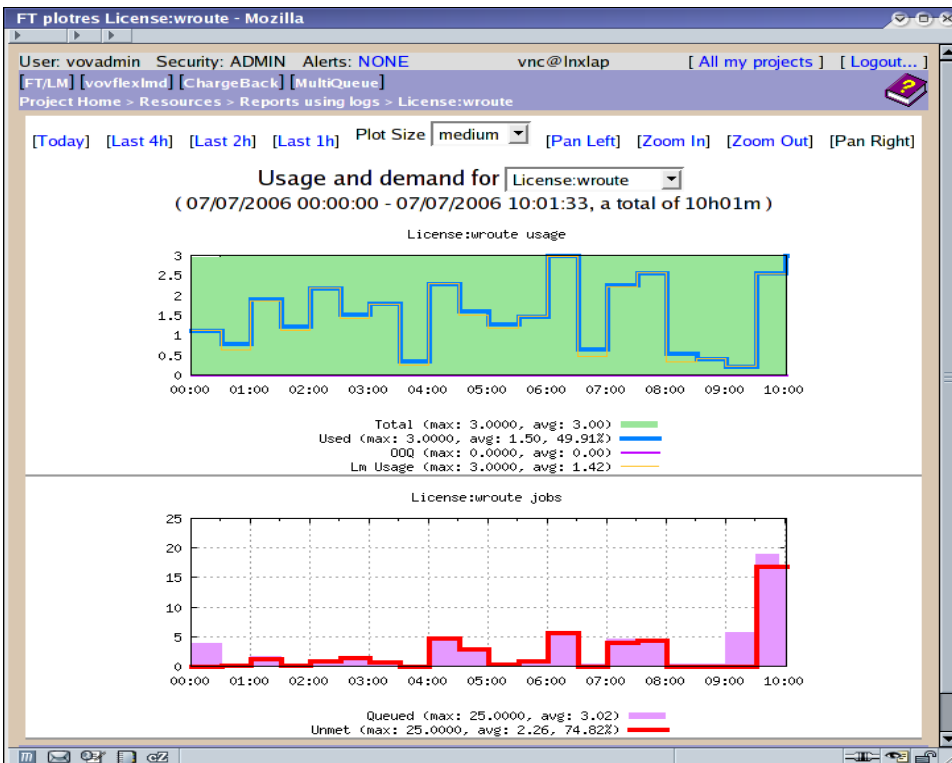
LicenseMonitor: Report generation on usage of software license and hardware resources.

WorkloadAnalyzer: Planning system that uses simulation to analyze "what-if" scenarios in the search for the optimal configuration of software and hardware resources.

About Runtime Design Automation

Runtime Design Automation provides enterprise resource management tools to monitor and manage resources, workload, and workflow. Founded in 1995, the company is privately held, with headquarters in Santa Clara, California.

To learn more about RTDA products or to schedule a demonstration, please contact us at sales@rtda.com or visit our website at www.rtda.com.



The reports on resource demand and average wait times promote the idea of saving money by sizing compute farms based on average resource demands rather than on peak usage.

© 2009 Runtime Design Automation. All rights reserved. RTDA, FlowTracer, NetworkComputer, LicenseMonitor, WorkloadAnalyzer, and the Runtime logo are trademarks of Runtime Design Automation. All others are the property of their respective holders.



Runtime Design Automation

2700 Augustine Drive, Suite 139
Santa Clara, CA 95054

www.rtda.com

408 492-0940